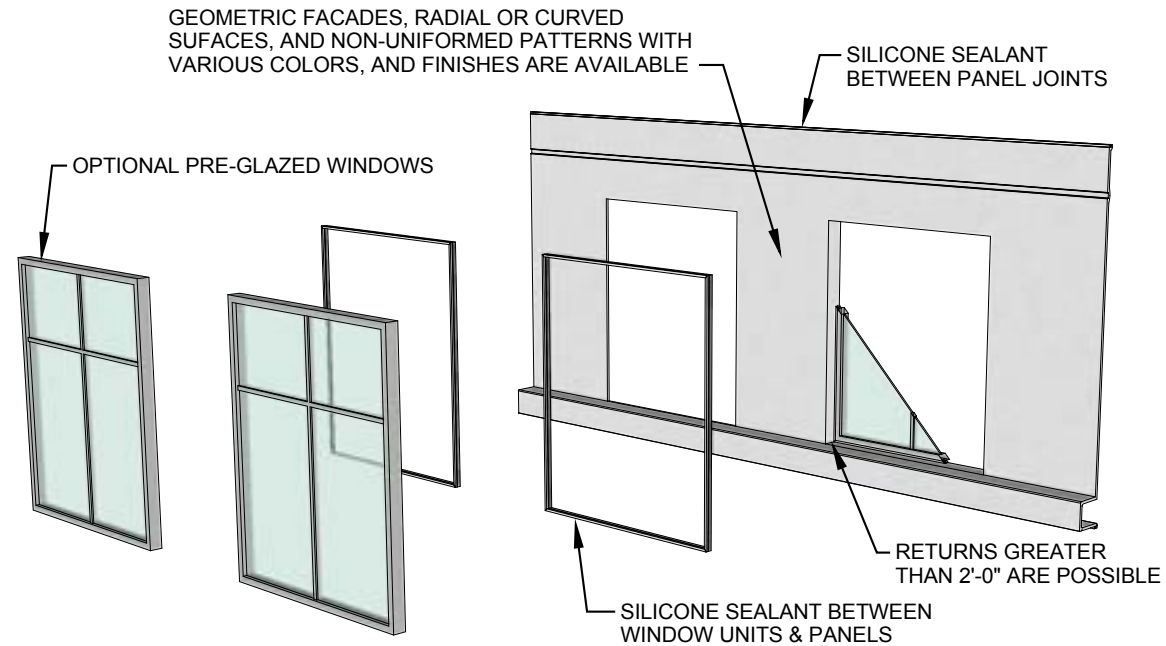
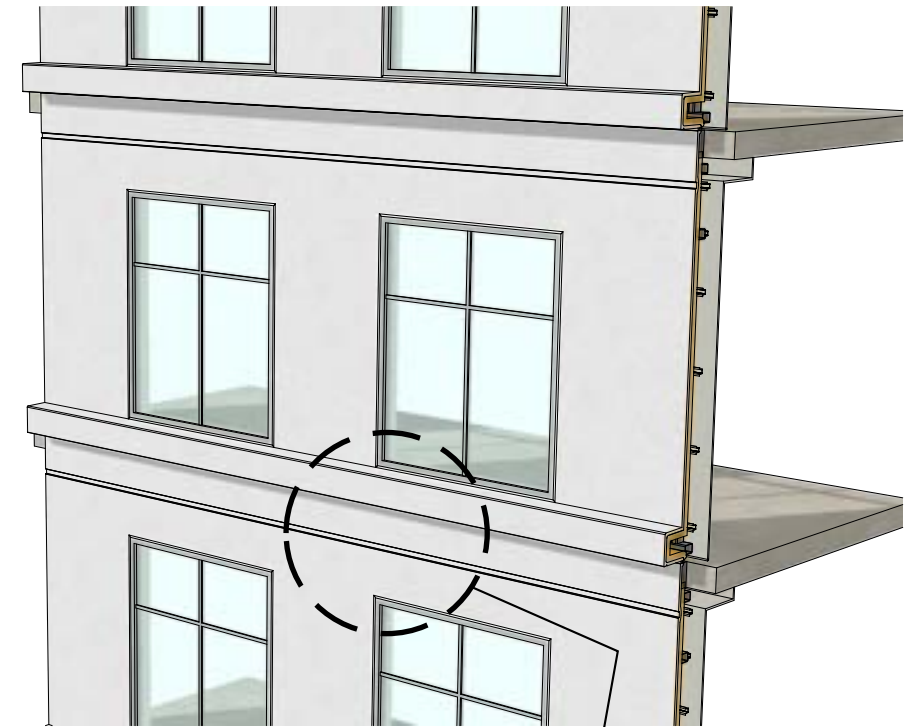




PANEL INTERIOR VIEW



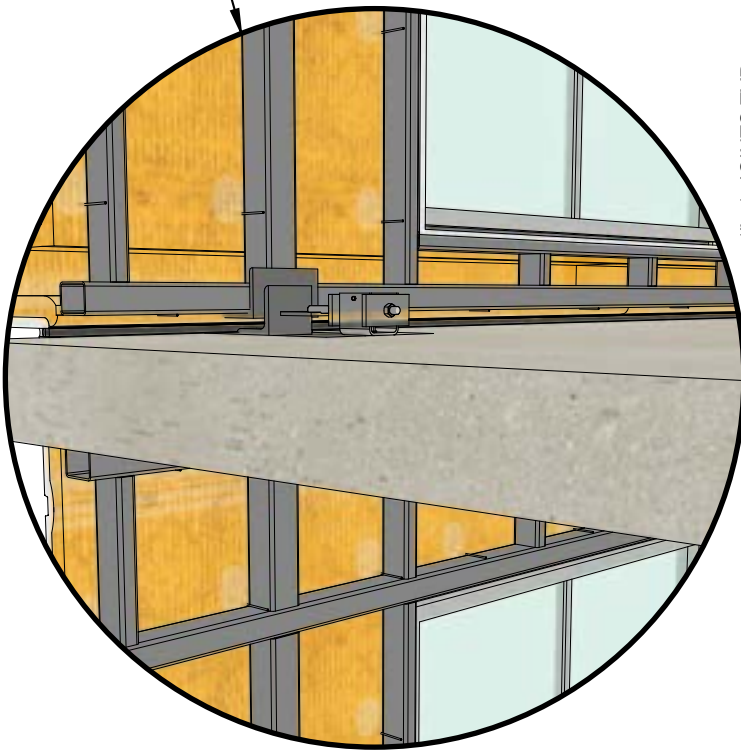
EXPLODED VIEW (ASSEMBLY)



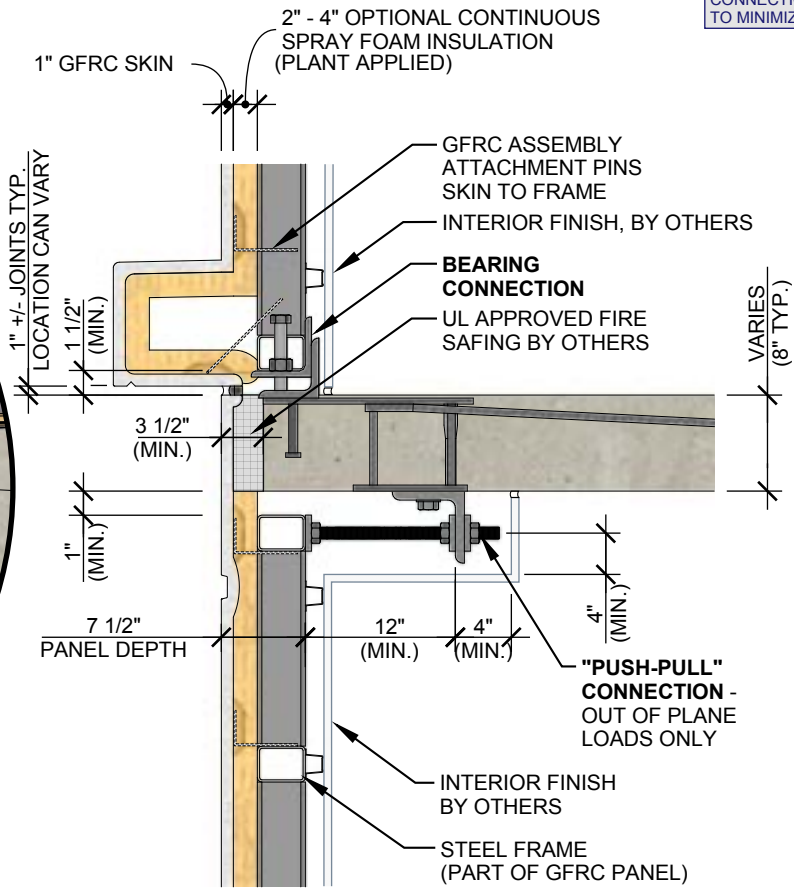
EXTERIOR VIEW

NOTE:
USE OF SPRAY FOAM REQUIRES AN "NFPA 285" AND/OR "ASTM E119" TESTED ASSEMBLY. CONTACT CLARK PACIFIC FOR DETAILS ON OUR TESTED ASSEMBLIES.

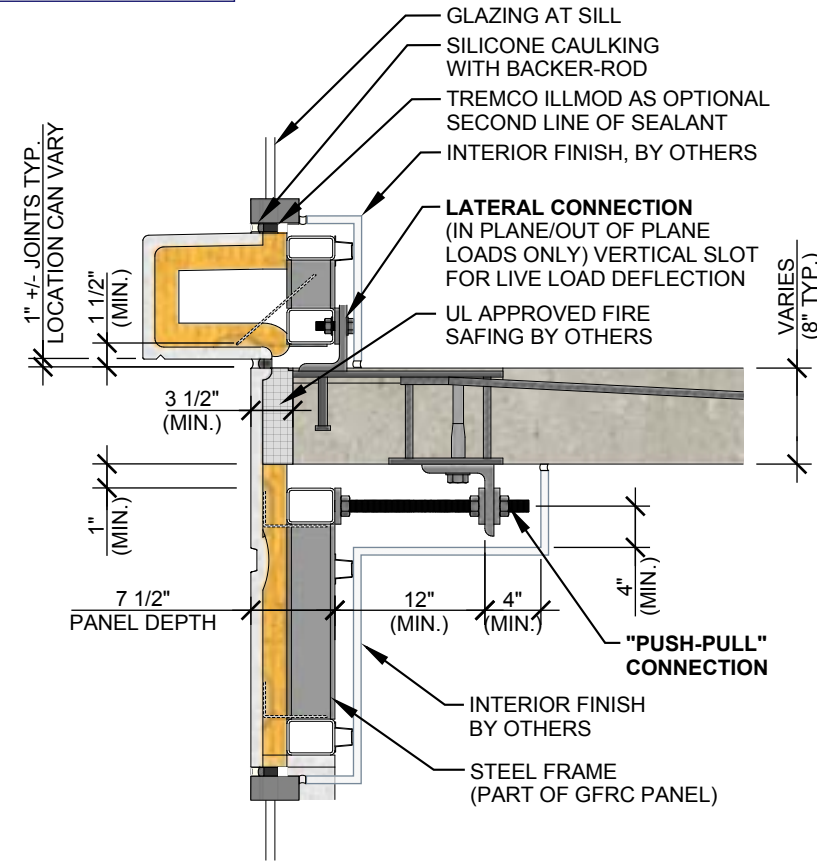
NOTE:
CONNECTION OPTIONS ARE AVAILABLE TO MINIMIZE TOTAL ASSEMBLY DEPTH.



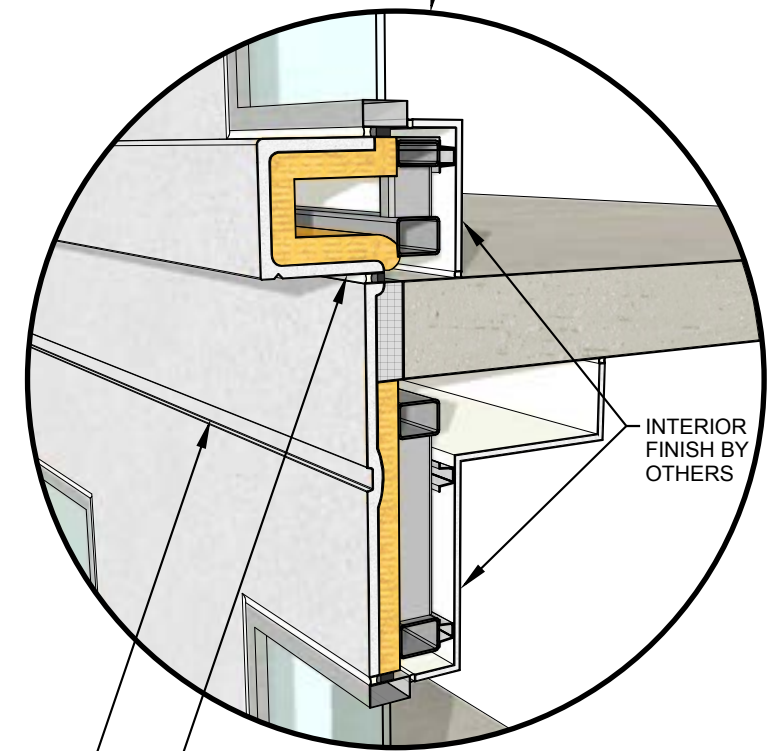
INTERIOR PERSPECTIVE VIEW



SECTION AT BEARING/PUSH PULL CONNECTION



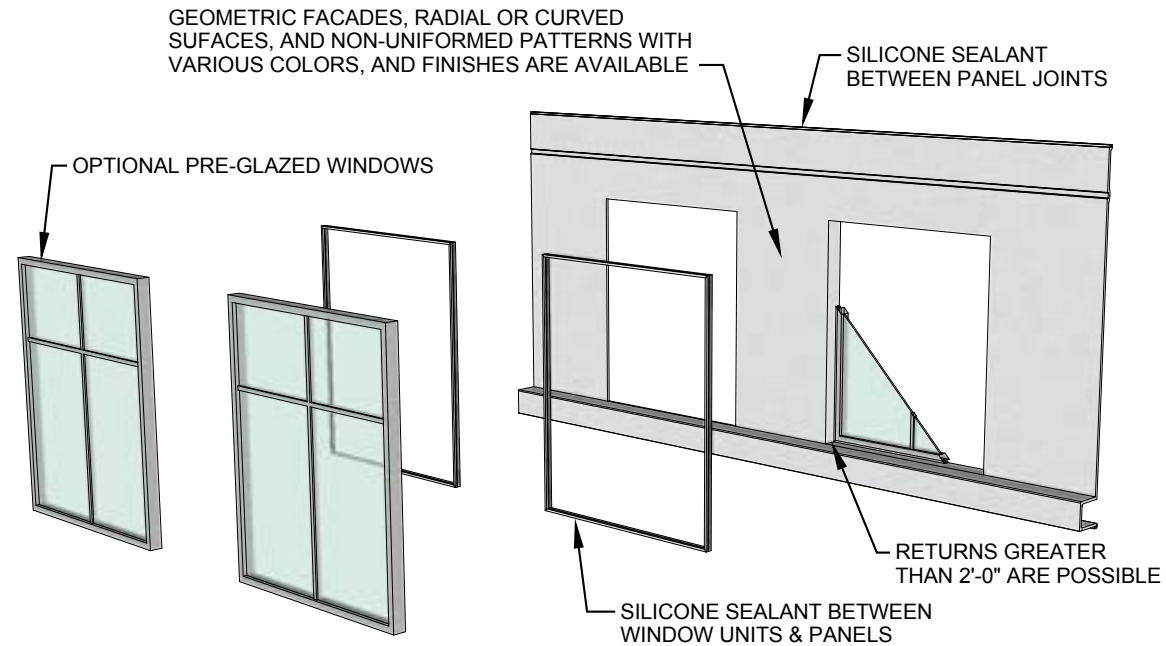
SECTION AT MID-SPAN LATERAL/PUSH PULL CONNECTION



INSTALLED PERSPECTIVE VIEW

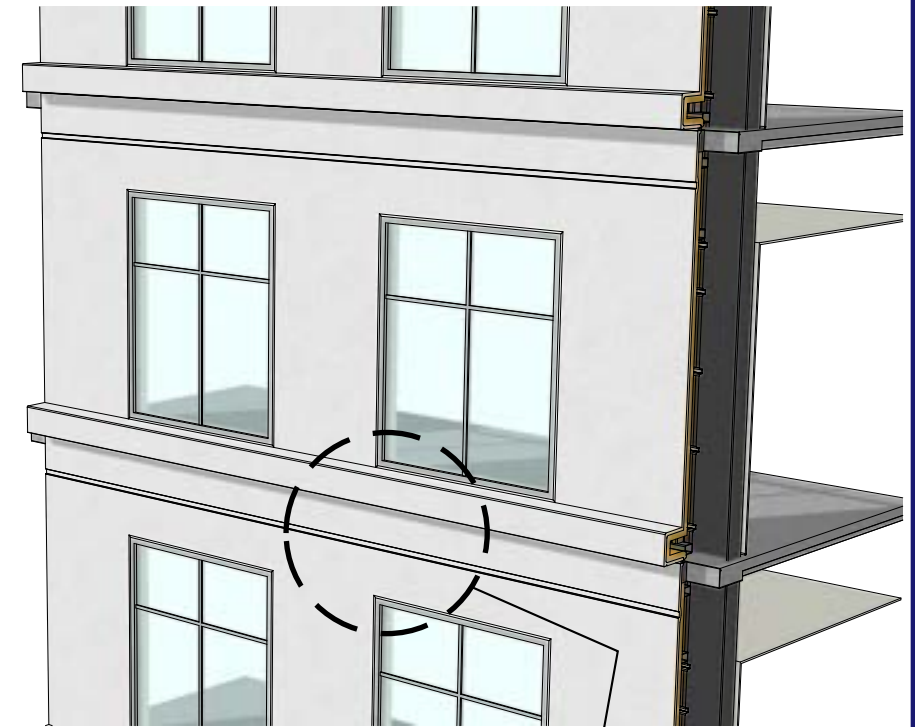


PANEL INTERIOR VIEW

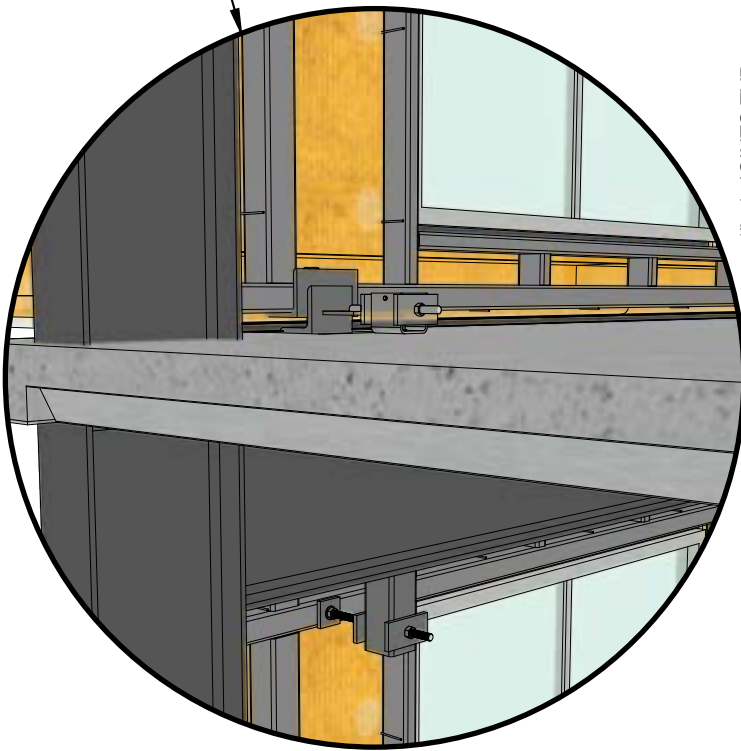


NOTE:
USE OF SPRAY FOAM REQUIRES AN "NFPA 285" AND/OR "ASTM E119" TESTED ASSEMBLY. CONTACT CLARK PACIFIC FOR DETAILS ON OUR TESTED ASSEMBLIES.

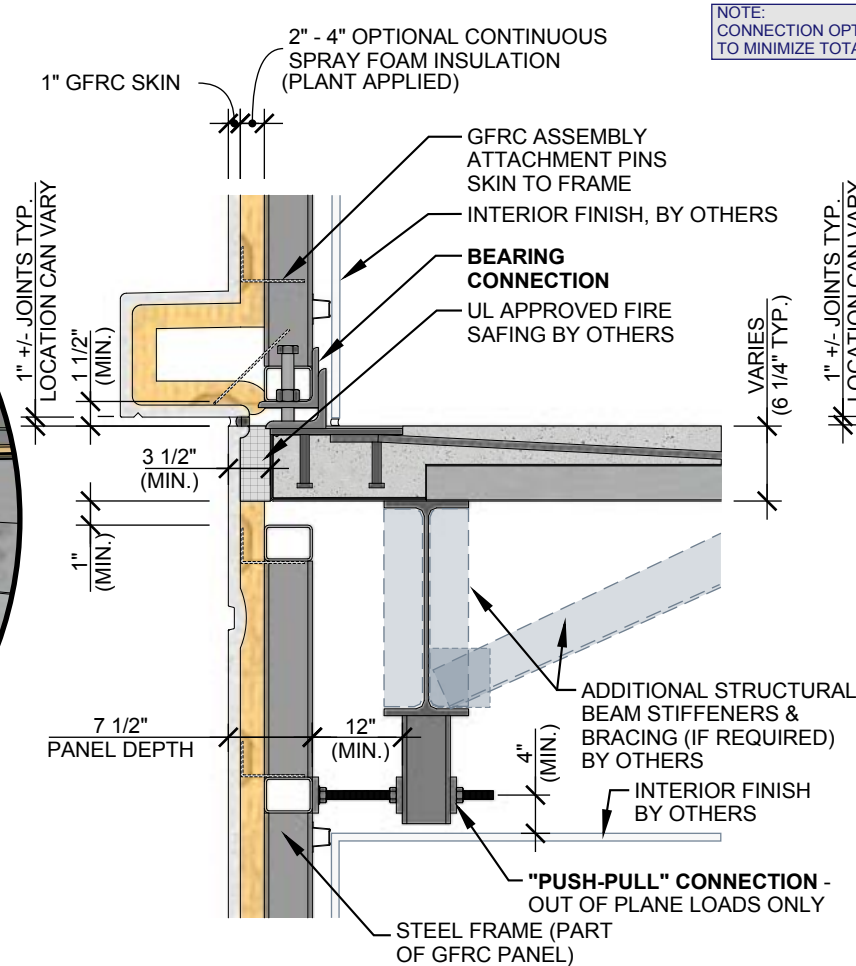
EXPLODED VIEW (ASSEMBLY)



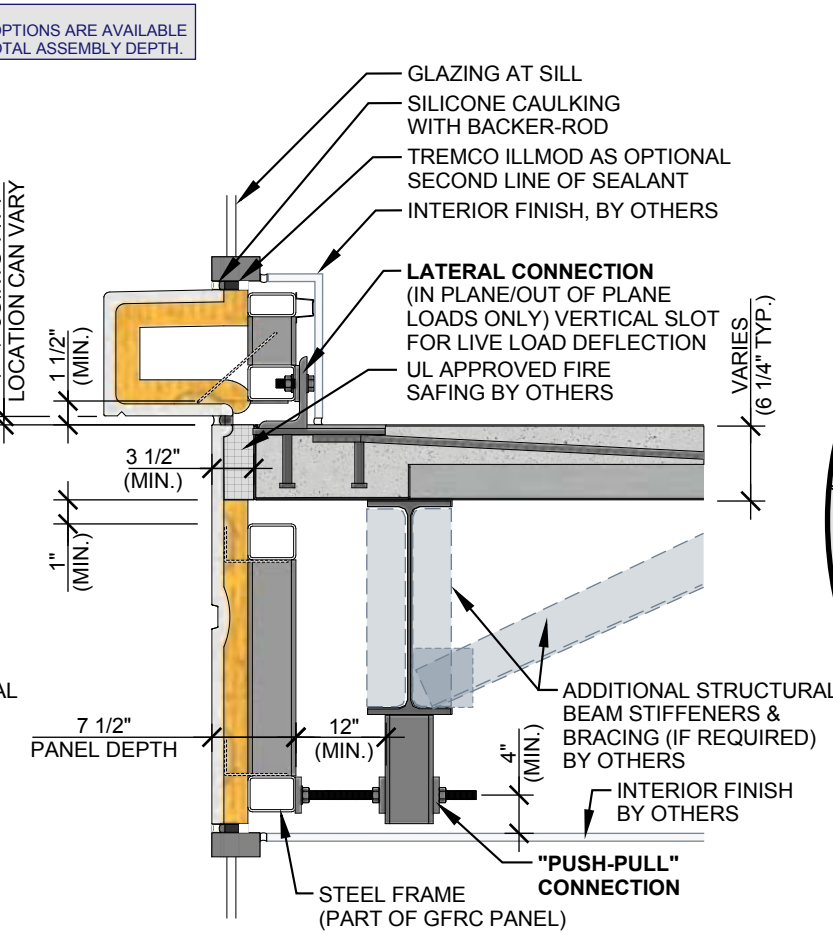
EXTERIOR VIEW



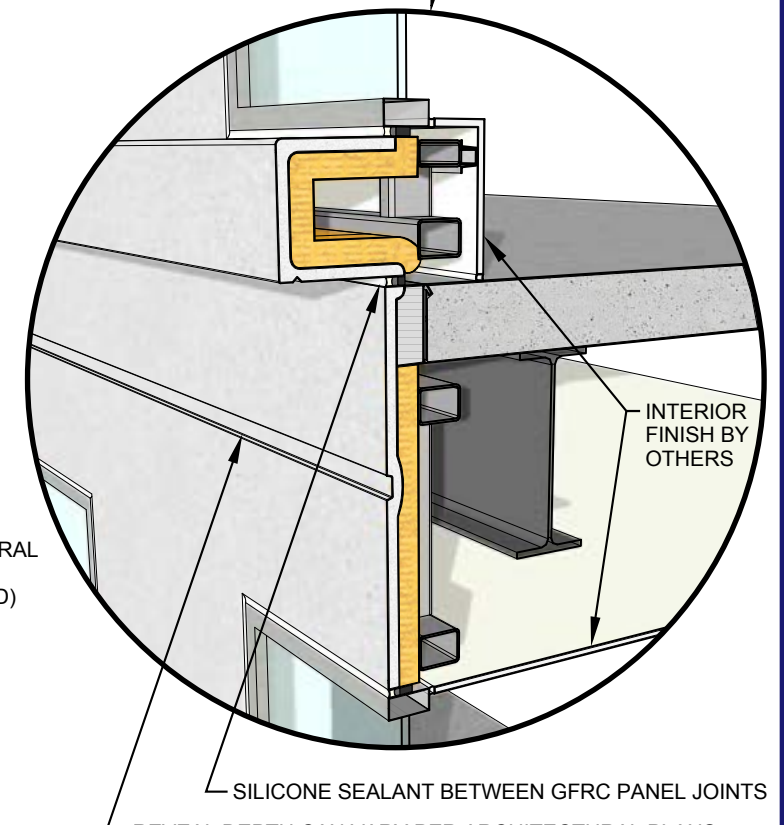
INTERIOR PERSPECTIVE VIEW



SECTION AT BEARING/PUSH PULL CONNECTION



SECTION AT MID-SPAN LATERAL/PUSH PULL CONNECTION



INSTALLED PERSPECTIVE VIEW