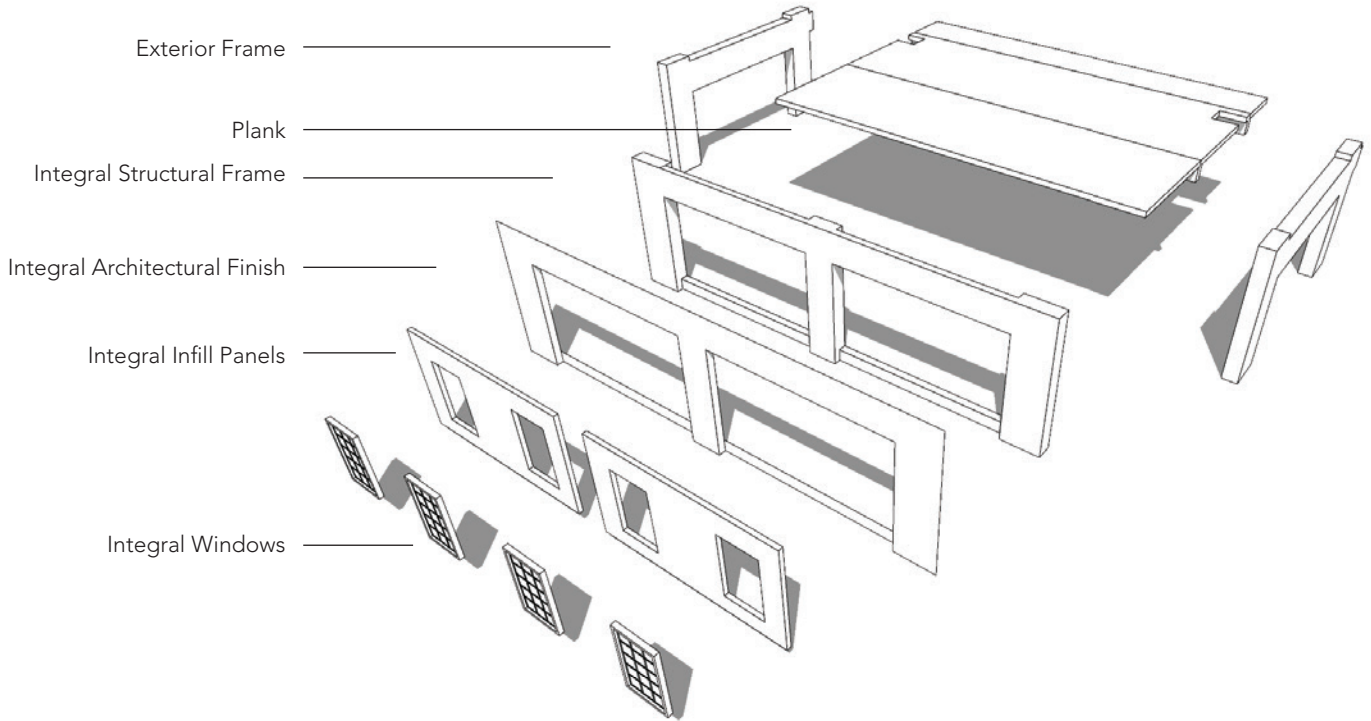
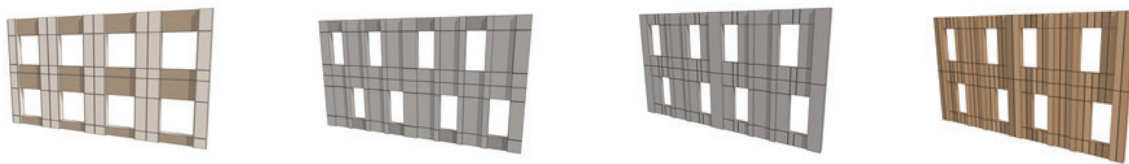




**CP Campus Housing** is a set of standard precast components designed for typical campus housing projects. The standard components provide a prefabricated structure and envelope for all campus housing building types. The components are designed to work together to provide a cost competitive and durable building with minimal site disruption.



Infinite Architectural Finish Options



### Features & Benefits

**CP Campus Housing** provides the entire structure and enclosure in one system. Allowing for:

- Maximum design flexibility
- The efficiency of prefabrication
- Integrated and customizable façade elements

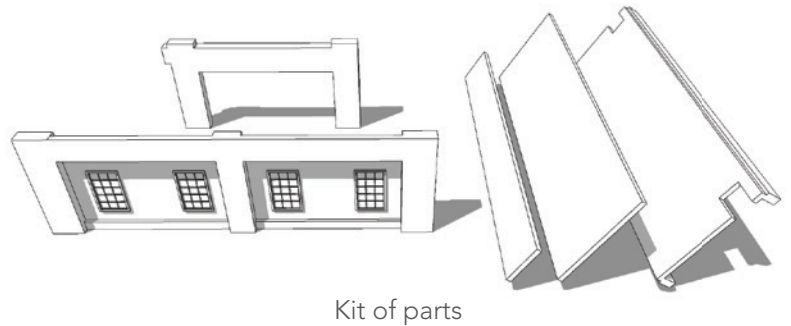
Our integrated structural and façade system allow for more of the building to be prefabricated and is less expensive and more efficient than piecing multiple systems together. **CP Campus Housing's** integrated products provide a cost competitive and faster onsite

Scope Items Included:	Alt. System: CIP	CP Components
Superstructure		
Structure	✓	✓
Crane Hoisting	✗	✓
Exterior Enclosure		
Exposed Architectural Precast	✗	✓
Exterior Infill Panels	✗	✓
Plant Installed Punched Windows	✗	✓
General Requirements		
Exterior Edge Safety Protection (LF)	✗	✓

## Standard Components

The standard components include:

- A structural precast and integrated enclosure framed panel with preinstalled windows
- An internal structural frame
- 3 different prefabricated and factory-topped slabs designed to accommodate MEP and floor to floor heights equivalent to that of all other systems.

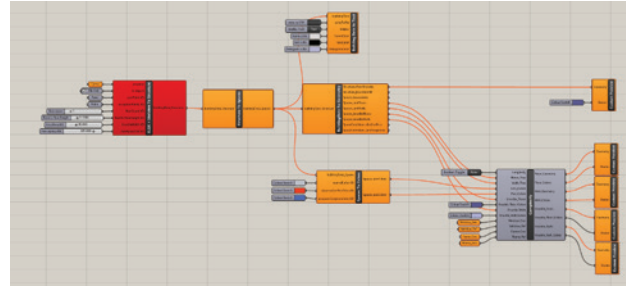


Kit of parts

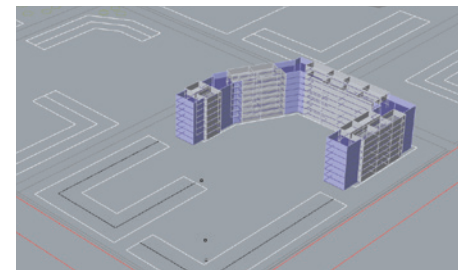
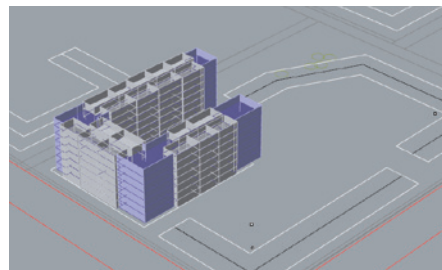
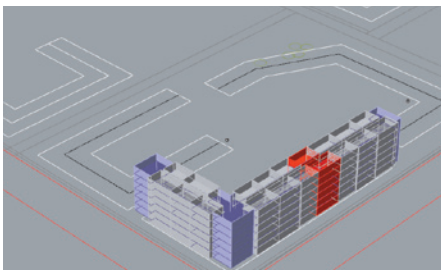


## Configuration = Customization

To facilitate use of our **CP Campus Housing** components, we developed the Collaborative Design Interface (CDI) that enables teams to rapidly configure multiple schematic designs. Early rapid prototyping with high-fidelity data output from the models enable quantitative Target Value Design, which ultimately means projects generate more value to owners.



Algorithm that assembles parts



Various outputs

## About Clark Pacific

Clark Pacific is a leading manufacturer of prefabricated building systems. We are transforming design and construction by delivering high quality, cost effective buildings with less risk. Clark Pacific paves the way for prefabrication as a smarter, safer and more efficient way to bring great designs to life. Clark Pacific collaborates with construction owners and design-build teams to develop and deliver prefabricated building systems for commercial and institutional projects of any size and complexity.



**Build different. Achieve more.**