



# Single-Source Parking Structure Solution





**GoPro Headquarters  
Parking Structure**  
San Mateo, CA



**CSU Sacramento  
Parking Structure 5**  
Sacramento, CA



### Product Based Delivery

- Complete pre-design based on standards & best practices
- Ready to manufacture + build
- Easily customized to accommodate unique project-specific requirements



### Owner Benefits

- Single source responsibility
- Accelerated delivery process
- Reduced design costs
- Lower cost than competing systems
- Compressed construction schedules
- Standard 5-year warranty on structure

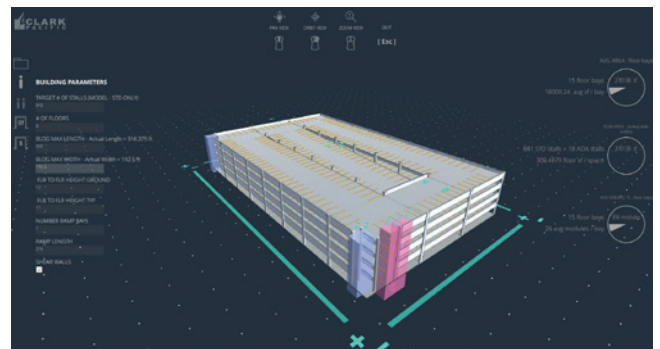
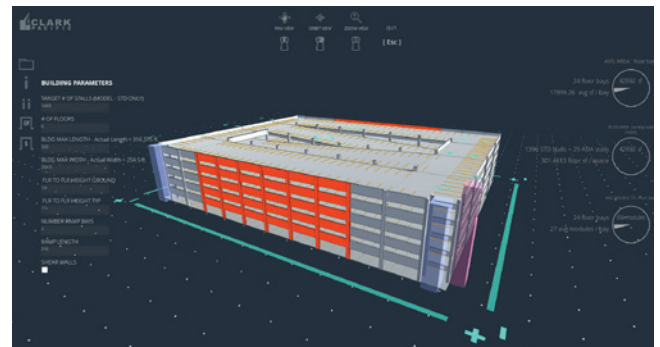
## PARC Configurator

PARC configurator is a rapid design tool that meets owner-driven requirements and objectives with conceptual parking structure designs, based on Clark Pacific's proven standards and prefabrication strategies.

With the configurator, designers and owners can rapidly test and compare different designs, structural schemes and ideas, with instant feedback and adjust parameters such as floor height, building length/width and parking geometrics to determine the most efficient design in compliance with owner and jurisdictional requirements.

### Features

- Easy input of design parameters
- Rapid development of building massing
- Rapid development of structural prefabricate solutions
- Output of high-level quantities for rough estimating
- Analysis and visibility into performance metrics that impact design and costs



Build different. Achieve more.