

BUILDING ENVELOPE SOLUTIONS

SINGLE POINT OF CONTACT FOR THE BUILDING ENVELOPE.

Projects can use a combination of CCAPP™, Infinite Facade™, GFRC and APC to meet functionality, aesthetic vision, and budget requirements.

ALL OF OUR FACADE SOLUTIONS:

- Meet or exceed Title 24.
- Prefabricated offsite for reduced site congestion and improved safety.
- Accelerate project schedules with budget certainty and reduced risk.
- 100's of color and material options for design flexibility.
- Single warranty for the building envelope.
- Option to install windows in our manufacturing facility.



APC ARCHITECTURAL PRECAST

Clark Pacific's Architectural Precast combined the benefits of high durability, low maintenance, excellent fire resistance and energy efficiency into one solution. This powerful combination makes architectural precast concrete an ideal solution for high-rise offices and residential towers, where emphasis is on prestige, luxury, and aesthetic appeal. Also ideal, for lower-rise offices and commercial structures, where economy and durability are paramount. Clark Pacific has been designing, manufacturing, and installing APC since 1963.



KEY FEATURES

- Skin Thickness - 5" minimum
- Overall Baseline System Depth - 5-8"
- Assembly - Full thickness concrete
- Typical System Weight - 75-85#/SF
- Typical Panel sizes - 15x30' can go up to 35'
- Water Repellent Required - No
- Returns - Up to 2'6"
- Prescriptive Category - Heavy Mass Wall

KEY BENEFITS

- Unlimited colors and textures. available - supports embedded materials (thin brick, stone, tile, etc.).
- Economical and durable, minimal maintenance.
- Factory Installed Punched windows.
- Low Maintenance.
- 60+ Year Life Spans.

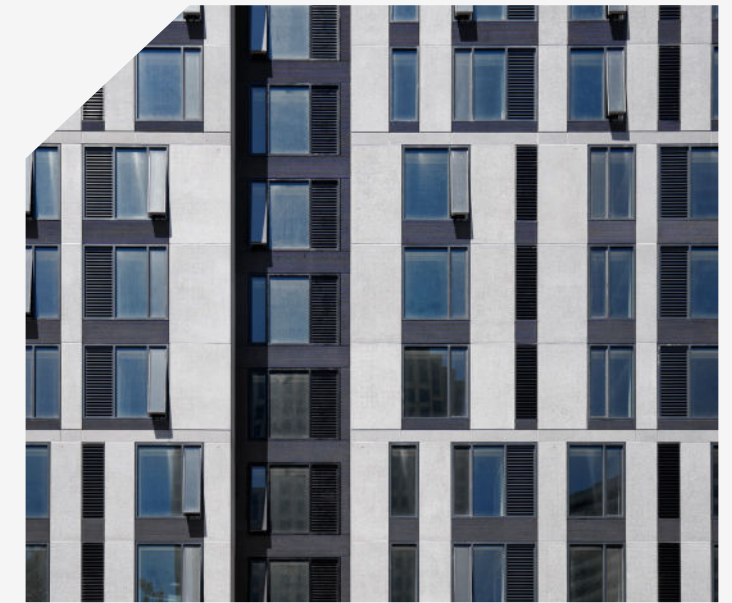
CCAPP™

CCAPP is a durable, lightweight, low maintenance cladding system that installs quickly and offers designers a wide range of color, texture, and detail choices. CCAPP is a hybrid product comprised of a 2 1/4" thick concrete skin that is mechanically attached to a sturdy steel frame with factory installed insulation. CCAPP is an excellent choice for high-rise buildings, multi-family, hospitality, and office buildings. Clark Pacific has been designing, manufacturing, and installing CCAPP since 1979.

Because there is no scaffolding required, installation of the panels is quick, reducing time in the field. CCAPP is a durable and weather-tight concrete cladding system that is competitively priced and affords designers a high-quality alternative to EIFS systems, stucco, masonry, metal panel and other rainscreen systems.

KEY FEATURES

- Skin Thickness - 2 1/4" minimum
- Overall Baseline System Depth - 8 1/4"
- Assembly - Concrete mechanically attached to HSS frame
- Typical System Weight - 30-35#/SF
- Typical Panel sizes - 15x30' can go up to 35'
- Water Repellent Required - No
- Returns - 1'-0" integral, 3' with assembly
- Prescriptive Category - Light Mass to Metal Frame



KEY BENEFITS

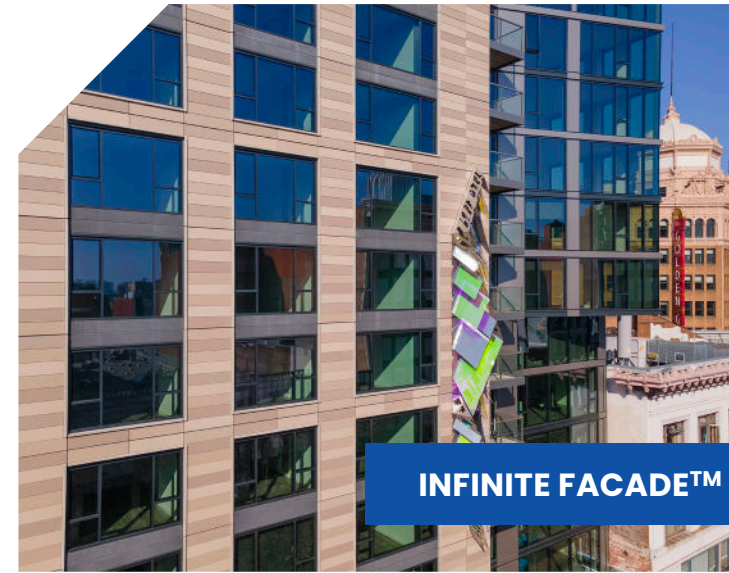
- Significant energy savings.
- Appropriate for all climates and seismic zones.
- Unlimited colors and textures available. supports embedded materials. (thin brick, stone, tile, etc.).
- Factory Installed Punched windows.
- 60+ Year Life Span.
- Low Maintenance.



APC



CCAPP™



INFINITE FACADE™



GFRC

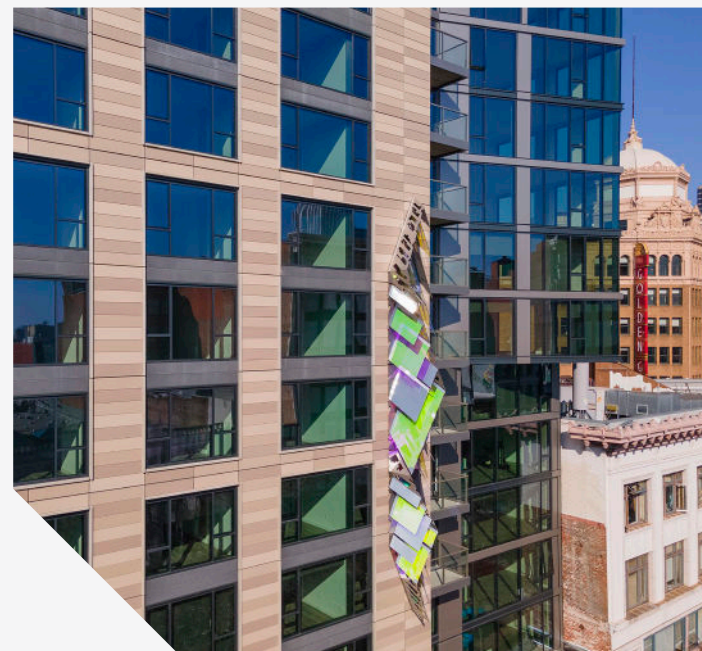
INFINITE FACADE™

Infinite Facade is a pre-engineered facade system using architectural concrete or GFRC as an exterior cladding, including an array of options for exterior finishes, with high-performance HFO spray foam insulation, structurally attached to cast in place or precast structural frame, and delivered to the jobsite with pre-designed connections to the primary building structure.

Our suite of pre-designed systems offers a wide range of geometric and aesthetic flexibility with the benefits of an off-the-shelf system, including reduced manufacturing costs and expedited delivery. Like CCAPP, Infinite Facade is a durable and weather-tight concrete cladding system that is competitively priced and affords designers a high-quality alternative to EIFS systems, stucco, masonry, metal panel and other rainscreen systems.

KEY FEATURES

- Skin Thickness – 2 1/4" concrete or 1" GFRC
- Overall Baseline System Depth – 8 1/4"
- Assembly – Concrete mechanically attached to HSS frame
- Typical System Weight – 30-35#/SF
- Typical Panel sizes – 15x30' can go up to 35'
- Water Repellent Required – No
- Standard connection and embed details



KEY BENEFITS

- Significant energy savings.
- Appropriate for all climates and seismic zones.
- Unlimited colors and textures available supports embedded materials (thin brick, stone, tile, etc.).
- GFRC can be used on frame.
- Low Maintenance.
- Factory Installed Punched windows.
- 60+ Year Life Span.

GFRC

GFRC panels are comprised of a 1" thick composite glass fiber concrete skin that is mechanically attached by flexible steel pins to a sturdy steel frame. GFRC panels are an excellent choice for high-rise buildings in areas of high seismic activity and for very decorative and intricate shapes and applications. Clark Pacific has been designing, manufacturing, and installing GFRC since 1981.

KEY FEATURES

- Skin Thickness – 1"
- Overall Baseline System Depth – 7" min
- Assembly – GFRC mechanically attached to HSS frame
- Typical System Weight – 18-20#/SF
- Typical Panel sizes – 15x30' can go up to 35'
- Water Repellent Required – Yes
- Returns – 8" integral, 3' with assembly
- Prescriptive Category – Metal Frame



KEY BENEFITS

- Lightweight and durable.
- Unlimited diversity in color and form.
- Ideal for sculptural shapes.
- Light weight and flexible.
- Good for high seismic zones.
- Factory Installed Punched windows.
- 60+ Year Life Span.

Build different. Achieve more.

1-800-350-0306 info@clarkpacific.com
clarkpacific.com

