



ACCELCORE™

PREFABRICATED STRUCTURAL DATA CENTER SYSTEMS

PROVEN, REPEATABLE AND SCALABLE SOLUTIONS

Clark Pacific delivers a total prefabricated solution for data center structures and enclosures, offering advantages traditional construction cannot match; accelerated schedules, predictability, and design flexibility.

We provide an all-inclusive suite of services, including test fit and early design-assist, ensuring efficient, high-performing, durable data centers. Manufactured in a controlled environment for superior quality and erected with precision by our experienced team.



ACCELSHELL™



INVERTED
T BEAM



L BEAMS



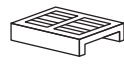
R BEAMS



COLUMNS



DOUBLE TEE



ACCELDECK™

Our approach offers prefabricated components that seamlessly integrate to create a complete, flexible, and efficient structure for next generation data centers.

PRODUCT HIGHLIGHTS

- Up to 600psf live load, superimposed floor capacity
- Long spans, 60ft plus for more white space, fewer columns
- 42'x60' typical grid at 400psf floor loading Structural Flexibility
- AccelDeck™ provides chiller support that integrates with the structural system
- Integrates with AccelShell™ Clark Pacific's Insulated wall panels and/or with other enclosure systems
- Structure is a 2-hour UL fire resistant rating
- Durable and resilient materials
- Excellent seismic performance



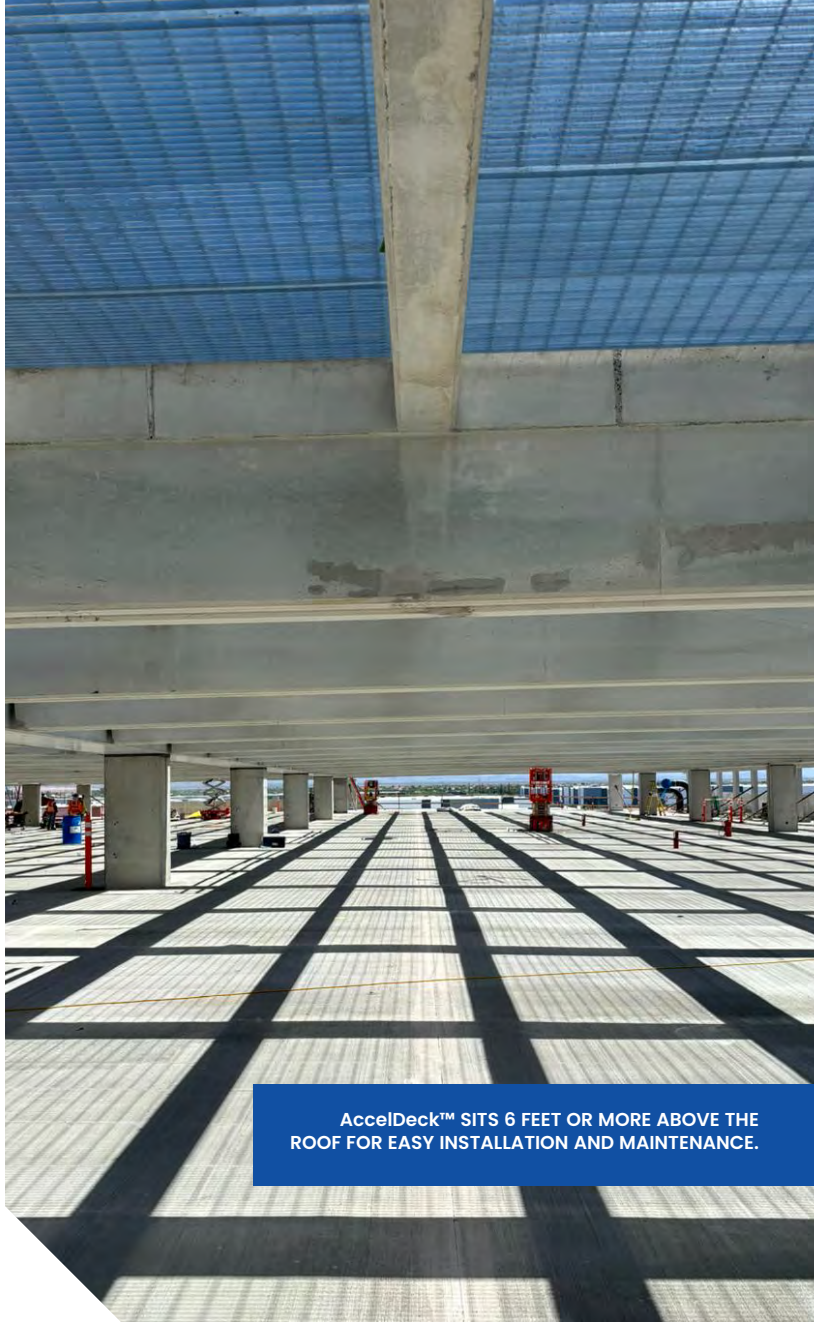
ACCELDECK™

PREFABRICATED CHILLER SUPPORT SOLUTION

The AccelDeck™ is designed to complement our total prefabricated structural solution. Engineered to replace traditional structural steel framing systems, the platform streamlines chiller installation, further accelerating project schedules.

SUPPORTING NEXT-GENERATION DATA CENTERS

- **Customizable Grids:** The beam profile and spacing are designed to fit most chiller models, providing flexibility for the owner to select different chillers later in the manufacturing phase and enabling future replacements without altering the underlying support structure
- **Load Capacity:** Standard configuration supports chiller, tanks and other equipment with weights up to 40,000lbs. Design can be customized to accommodate more challenging equipment configurations.
- **Integration:** Fully compatible with Clark Pacific's structural system, ensuring durability, longevity, and seamless integration with the overall project.



AccelDeck™ SITS 6 FEET OR MORE ABOVE THE ROOF FOR EASY INSTALLATION AND MAINTENANCE.



Accelerated Construction: Incorporating the AccelDeck™ into a prefabricated precast data center can reduce project timelines by



Embedded Strut-Channel Inserts: Simplifies pipe and equipment installations, making it easier to hang and route systems.



Moveable Grates: Improve maintenance access in completed data centers.



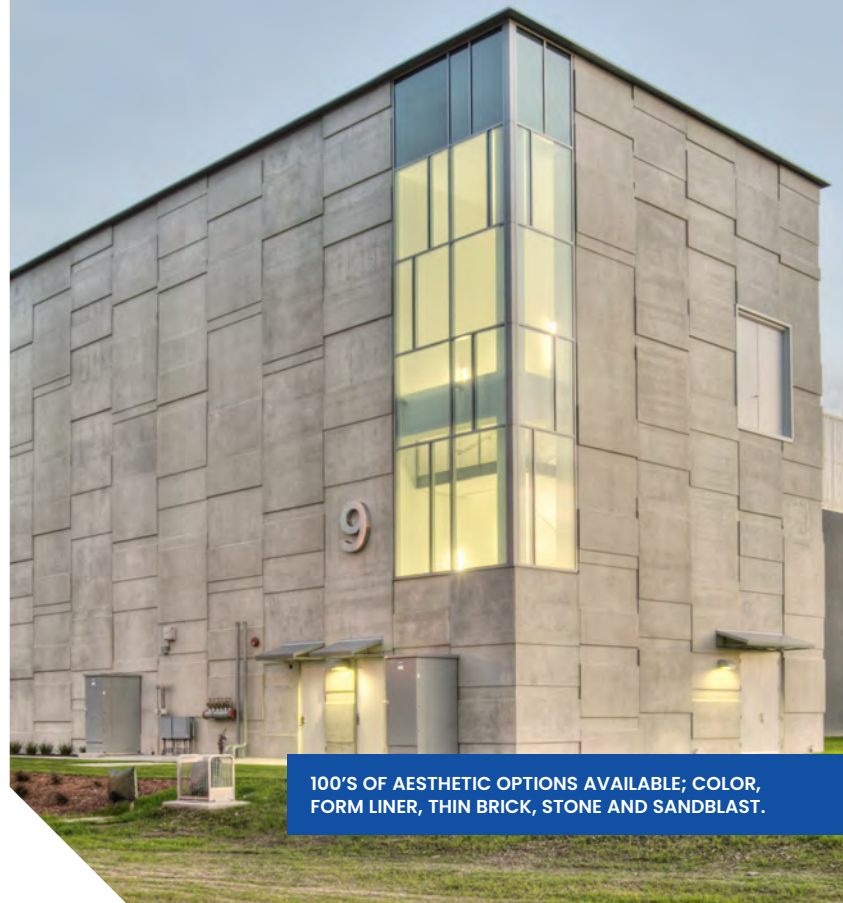
Easy Installation and Maintenance: Six foot plus heights, providing easy access for maintenance and future equipment upgrades.

ACCELSHELL™

PREFABRICATED INSULATED WALL PANELS FOR EITHER NON-LOAD OR LOAD-BEARING SOLUTIONS

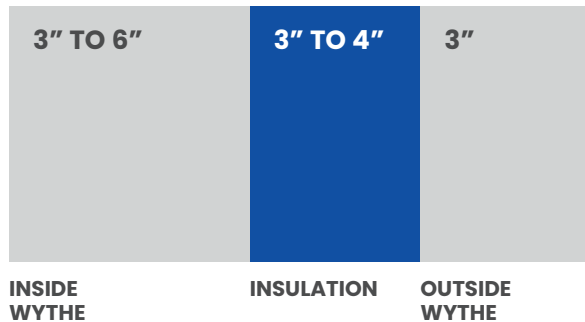
Clark Pacific's AccelShell™ insulated wall panels offer unmatched versatility and performance, making them an ideal choice for data center buildings. Designed to meet project-specific thermal requirements and aesthetic preferences, these panels combine superior insulation with customizable finishes.

AccelShell™ panels can serve as either an exterior enclosure, providing insulation and weather protection or as load bearing to support structural loads and lateral forces, eliminating the need for exterior framing.



100'S OF AESTHETIC OPTIONS AVAILABLE; COLOR, FORM LINER, THIN BRICK, STONE AND SANDBLAST.

TYPICAL PANEL

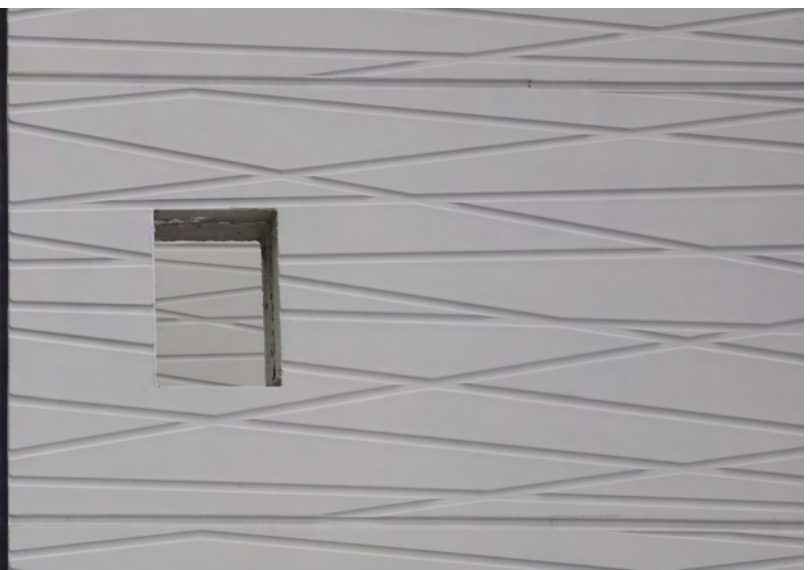


Typical R-Value Range: 15 - 25

STANDARD DETAILS AND DESIGN

- Wall panels engineered to meet desired performance
- Wall panels can be cladding only OR load-bearing
- Multiple sealant lines
- Insulation thickness depends on thermal requirements (R-value)
- Typical R-value range 15-25
- Standard components

MULTI-FINISH PANEL:
STAINED CONCRETE FINISH AND FORM LINER.



BENEFITS OF PREFABRICATED STRUCTURAL DATA CENTERS

 **Structural Flexibility**

 **Accelerated Schedule**

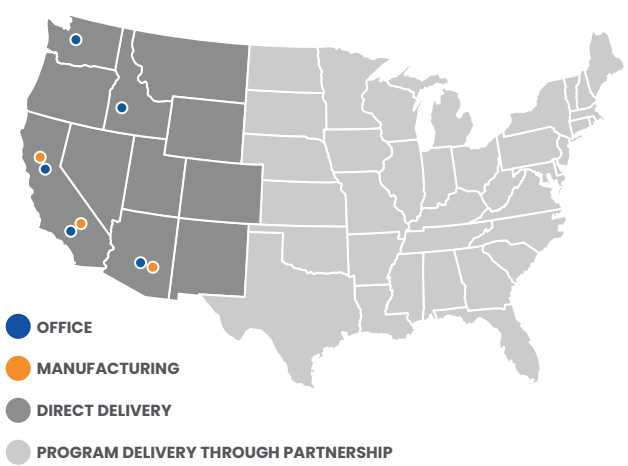
 **Cost Certainty**

 **Predictable Delivery**

 **Sustainable, Low-Carbon Options**

 **Resilient and Durable Materials**

SERVING THE WESTERN U.S. AND NATIONWIDE THROUGH STRATEGIC PARTNERSHIPS



CLARK PACIFIC EXPERIENCE

63+
YEARS IN OFFSITE CONSTRUCTION

300
ACRES OF MANUFACTURING AND STORAGE CAPACITY

16+M
SQFT DATA CENTER EXPERIENCE



Clark Pacific is prepared to help advance your low-carbon strategy. Our structural data center solutions utilize CARBONSHIELD® our low-carbon cement replacement.