



Torrey Heights  
Infinite Facade with GFRC

# BUILDING ENVELOPE SOLUTIONS

**CLARK PACIFIC DESIGNS, ENGINEERS, FABRICATES AND INSTALLS HIGH-PERFORMANCE BUILDING ENVELOPE SYSTEMS FOR ALL BUILDING TYPES.**

---

Our facade solutions are trusted for their versatility, long-term durability, and exceptional value — delivering a single-source solution for architects, owners, and general contractors alike.

From standout design to reliable performance, Clark Pacific simplifies every step of the building envelope process.

**All Our Prefabricated Facade Solutions Offer:**

- Constructability and reduced risk.
- Hundreds of color, texture, and material options.
- Superior durability and performance with low maintenance.
- Reduced site congestion and improved safety.
- Accelerated project schedules with budget certainty.
- Single point of contact and warranty for multiple scopes:
  - Optional punched window installation in our manufacturing facility.
  - Optional factory-installed HFO spray foam insulation to help meet or exceed energy codes.



# INFINITE FACADE™

Infinite Facade™ is the foundation of Clark Pacific's highly customizable, pre-engineered facade solutions, with off the shelf high-tolerance connections. It can accommodate various window to wall ratios and is optimized for full-height factory-installed windows.

Infinite Facade provides a wide range of geometric and aesthetic flexibility with all the benefits of a standardized prefabricated system; streamlined coordination, reduced manufacturing costs and environmental impacts with expedited delivery.

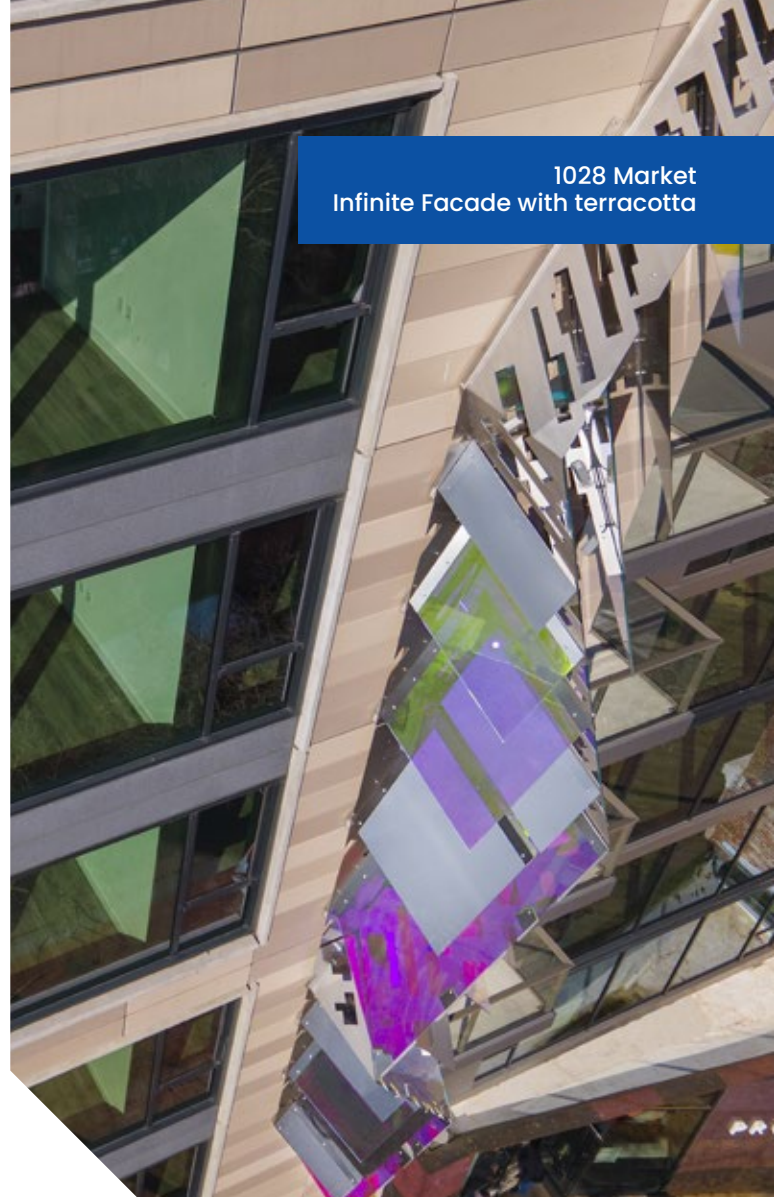
Through smart material usage, proactive design and prefabrication Infinite Facade is proven to reduce embodied and operational carbon:



↓ 30% Infinite Facade reduces heating energy by ~30% when compared to typical construction assemblies\*



↓ 60% Global Warming Potential reduced by over 60% when compared to traditional curtain wall systems\*



1028 Market  
Infinite Facade with terracotta



Single solution for the frame, weather barrier, insulation, finish, connection and windows (optional).

- Optimized for full-height factory installed windows
- Choose between lightweight concrete or GFRC for the exterior skin
- Full array of exterior finish and material options
- Designed for manufacturing
- Durable, longer lifespan than traditional envelope systems

\*When used with our lightweight concrete skin.

Depending on the project vision either a concrete or GFRC skin can be applied to the Infinite Facade frame to achieve the design intent.

# CONCRETE SKIN

Our concrete skin is a lightweight cladding solution comprised of a 2 1/2" thick concrete skin mechanically attached to the Infinite Facade frame, with optional factory-installed HFO spray foam insulation.

Offering high durability and energy efficiency with standout design flexibility for about 60% of the weight of APC.

It is a high-quality alternative to EIFS systems, stucco, masonry, metal panel, and other rainscreen systems.

- Competitively priced
- Supports embedded materials (thin brick, tile, thin terracotta, etc.)
- Well-suited for projects with high seismic loading
- Supports up to 4" of specified HFO spray foam to meet or exceed energy codes and to minimize operating costs.

CSU Los Angeles, Student Housing  
Infinite Facade with lightweight  
concrete skin.

730 Stanyan  
Infinite Facade with GFRC

# GFRC

GFRC is a very light-weight cladding system comprised of a 1" thick glass-fiber-reinforced concrete skin mechanically attached to the Infinite Facade frame, with optional factory-installed HFO spray foam insulation.

GFRC is the ideal material option as it allows for distinctly decorative and intricate shapes, offering the perfect union of durability and freedom of form. Weighing in at just 30-40% the weight of APC, it is also ideal for projects in high-seismic areas.

- Light-weight and durable
- Unlimited in color and form
- Ideal for sculptural shapes
- Well-suited for projects with high seismic loading
- Supports up to 4" of specified HFO spray foam to meet or exceed energy codes and to minimize operating costs.



# ARCHITECTURAL PRECAST (APC)

APC combines the benefits of high durability, low maintenance, excellent fire resistance and energy efficiency into one economical solution. It is ideal for lower-rise office and commercial structures where economy and durability are paramount.

## ASSEMBLY:

---

- Concrete + optional spray foam
- Concrete Thickness: 5" baseline w/ 3/4" reveals
- Baseline Opaque System Weight: 65psf
- WWR 30/70 ~ 49psf
- Panel Size: 10'x30' typical, 15'x35' max
- Returns: Up to 2'-6"
- CEC Energy Efficiency Category: Light Mass

- Economical
- Supports embedded materials (thin brick, stone, terracotta, tile, etc)
- Ideal for projects subject to blast and ballistics performance requirements
- Light Mass status reduces wall assembly insulation requirements by >50% in California.

**Build different.  
Achieve more.**  
1-800-350-0306

[clarkpacific.com](http://clarkpacific.com)



**CLARK PACIFIC**



Mission Rock G  
APC with factory installed windows